



ADDEV
MATERIALS

parafix.com

Project Case Study

ADDEV Parafix Expands Production Capabilities with a Facility-Scale Modular Cleanroom.

The Client

ADDEV Materials

Location

Lancing, UK

Sector

Healthcare &
Wellness

ADDEV Parafix Expands Production Capabilities with a Facility-Scale Modular Cleanroom

The Client

ADDEV Materials

Location

Lancing, UK

Sector

Healthcare &
Wellness

The Company



ADDEV Parafix, based in Lancing on the south coast of England, is part of the ADDEV Materials Group and serves as the European centre of excellence for the Healthcare & Wellness business unit.

With over 50 years of expertise in converting, ADDEV Parafix is a key player in the transformation of high-performance materials across Healthcare & Wellness, Industry, and Electronics. The company partners with leading global material manufacturers, converting flexible materials such as medical-grade adhesives, technical films, foams, nonwovens, and membranes into customised, ready-to-use solutions.

In recent years, strong growth across MedTech, pharmaceuticals, life sciences, and personal care has driven increased demand for precision manufacturing within controlled environments. To support both its long-standing customers and new opportunities, ADDEV Parafix initiated a major expansion of its production capabilities.

The Challenge

Following a relocation to larger premises, ADDEV Parafix identified the need for a new ISO Class 7/8 certified cleanroom capable of supporting higher production volumes and increasingly complex converting processes.

The objective was to go beyond capacity expansion and create a controlled environment fully aligned with operational realities and regulatory expectations.

Key requirements included:

- ▶ Supporting multi-zone production workflows
- ▶ Maintaining strict separation between processes
- ▶ Integrating advanced converting machinery
- ▶ Optimising operator and material flow
- ▶ Ensuring scalability for future growth



As [Richard Sincock](#), General Manager at ADDEV Parafix, explains:

"Our customers operate in highly regulated environments where consistency and contamination control are critical. We needed a facility that could meet those expectations while allowing us to scale efficiently. This was not just about gaining more space. We needed an environment designed around how our teams work."

The Solution

To bring this vision to life, ADDEV Parafix partnered with Monmouth Scientific to design and deliver a large-scale modular cleanroom tailored to its operational needs.

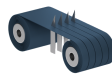
The resulting facility spans approximately 500m² and is structured into 15 operational zones, including airlocks, gowning areas, production cells, material transfer points, and dedicated packing zones. Each zone is engineered to maintain controlled transitions between ISO Class 7 and ISO Class 8 environments.

Working closely with Monmouth Scientific, the cleanroom was specifically designed around ADDEV Parafix's converting processes and equipment, ensuring optimal workflow, reduced handling risk, and high process efficiency.



Within this controlled environment, ADDEV Parafix deploys advanced converting technologies, including multiple Delta ModTech machines, supporting:

- ▶ **Die-cutting** and **rotary laser cutting** for high-precision components
- ▶ **Multi-layer lamination** under controlled conditions
- ▶ High-tolerance **slitting** with accuracy up to $\pm 0.25\text{mm}$
- ▶ **Island placement** for complex adhesive assemblies
- ▶ **Finishing and packing** tailored to customer requirements



“

“The collaboration with Monmouth Scientific was key. They understood our operational constraints and translated them into a design that truly supports how we produce.”

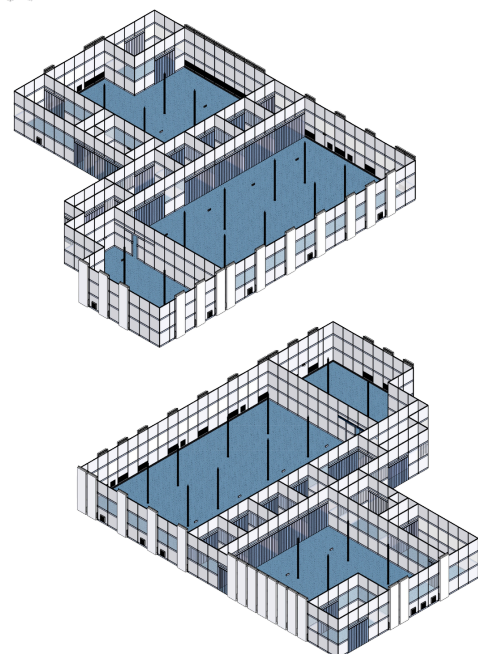
Richard Sincock, General Manager | ADDEV Parafix

The Result

The new cleanroom has enabled ADDEV Parafix to operate a fully integrated, high-precision production environment with controlled conditions at every stage.

By structuring operations into clearly defined zones, the company has achieved:

- ▶ Streamlined material flow from intake to dispatch
- ▶ Improved segregation of sensitive processes
- ▶ Enhanced control of particulate and environmental conditions
- ▶ Increased throughput capacity
- ▶ Greater flexibility in machine deployment



Commenting on the project, [Lewis Irish](#), Sales Director at Monmouth Scientific, said:

"This project represents a significant milestone for Monmouth Scientific. Delivering our largest Modular Cleanroom to date, at this scale and complexity, demonstrates the capability and flexibility of our modular systems when applied to client challenges."

"Working closely with ADDEV Materials, the focus was on ensuring the environment supported both current manufacturing requirements and long-term operational growth. The result is a highly controlled, multi-zone facility that achieves exactly that."



Modular Environment

15 large-scale operational zones adaptable to production needs, machines and ADDEV Parafix activity.



ISO Class 7 & 8 Certified

Each zone is engineered to maintain controlled transitions between ISO Class 7 and ISO Class 8 environments.



Large-scale Work Surface

The resulting facility spans approximately 500m², largest Modular Cleanroom to date for both Monmouth Scientific and ADDEV Materials.

The modular design, delivered by Monmouth Scientific, also ensures long-term scalability. The facility can evolve alongside business needs, with additional zones or capacity integrated with minimal disruption.

"This facility gives us confidence in both our current capabilities and our future growth," [Richard](#) adds.

"We now have a platform that can adapt as our customers' requirements evolve."

The Impact & Feedback

For ADDEV Parafix, this cleanroom represents a strategic investment in its ability to serve highly regulated industries at scale.

By combining its converting expertise with a facility designed and delivered in partnership with Monmouth Scientific, the company has strengthened its ability to deliver precision, consistency, and flexibility across all production stages.

"What stands out most is the scalability," Richard concludes.

"We are not constrained by this environment. It has been designed to grow with us. The cleanroom has improved consistency across our processes, and our teams have adapted quickly because the layout feels intuitive and purpose-built."

ADDEV Parafix is highly satisfied with the collaboration with Monmouth Scientific, from initial design discussions through to final installation. The team demonstrated a strong understanding of operational requirements and delivered a solution aligned with both current needs and future ambitions.

Based on this experience, ADDEV Parafix would confidently recommend Monmouth Scientific for the design and delivery of modular cleanroom environments supporting complex, high-precision manufacturing.



**PROTECTING
WHAT
MATTERS**

**Monmouth
Scientific**

info@monmouthscientific.co.uk
+44(0)1278 458090

UK Headquarters

Monmouth House,
Peninsula Business Park,
Bristol Road, Bridgwater,
Somerset,
TA6 4QB.

Controlled clean environments for critical applications.

monmouthscientific.co.uk



Fume Containment | Biological Safety | Modular Cleanrooms | Powder Handling | Laminar Flow



**CONVERTING INDUSTRIAL CHALLENGES INTO
SUSTAINABLE MATERIAL SOLUTIONS**

HEALTHCARE & WELLNESS
ENGINEERED ADHESIVE SOLUTIONS

MEDTECH | PHARMACEUTICALS & LIFE SCIENCES | PERSONAL CARE | HYGIENE

ADDEV Parafix

25 Marlborough Rd,
Lancing BN15 8TG

sales.apx@addevmaterials.com

+44 (0)1903 750000

www.parafix.com

www.addevmaterials.com